



FUNDING RESEARCH TO FIND A CURE

2013 TBBCF Annual Meeting

Welcome !!!!!!!



FUNDING RESEARCH TO FIND A CURE

Welcome !

Our 2013 TBBCF Annual Meeting is special . . .

- We celebrate ***\$2.4 Million Dollars*** raised for breast cancer research in 7 years!
- We'll look at where we are and our successes
- We'll look at our goals and our plans
- We'll 'pause for applause' and recognize our top fundraisers and supporters



2013 TBBCF Board of Directors

- Norma M. Logan (1958-2006)
- Patti Burmahl – President
- Donna Yother – Vice President
- Stacey Gualtieri - Treasurer
- Pat Newborg – Secretary
- Mary DeVizia - Executive Director
- Lisa Carroll
- Howie Brensilver
- John LaMattina
- Michelle Sottile-Hoyt
- Jean Logan
- Sandy Maniscalco (Co-founder)
- Stephen Sheehan
- Laureen Sullivan
- Ellen Swercewski
- Pat Todd



FUNDING RESEARCH TO FIND A CURE

Scientific Advisory Committee

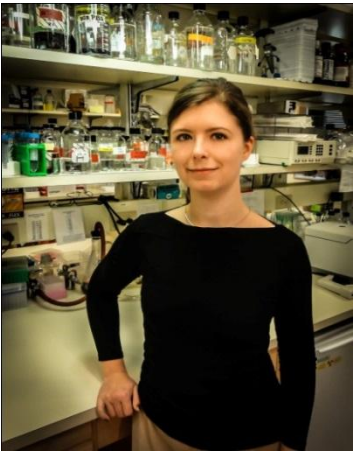
- Nick Saccomano, Ph.D., Chair
- Howie Brensilver, M.D.
- Michael Garabedian, Ph.D.
- John LaMattina, Ph.D.
- Susan Logan, Ph.D.
- Michael Morin, Ph.D.

This team awards our research grants, and evaluates progress. The \$2.4M allocated in grants translates to 48 years of funded research!



FUNDING RESEARCH TO FIND A CURE

2013 Research Grant Recipients



*Cold Spring Harbor
Laboratory*
**Olga Anczuków-
Camarda, PhD**



*Roswell Park Alliance
Foundation*
Stefano Rosetti, PhD



*Dana Farber Cancer
Institute - Harvard*
Sadhna Vora, M.D.



Our Sponsors Make Our Success Possible!

FUNDING RESEARCH TO FIND A CURE

Platinum



Chester Kitchings Family Foundation

Emerald



Patricia Burmahl



Diamond



Sapphire



copper pot pictures

Crosswicks Foundation, LTD

The Logan Family



GENERAL DYNAMICS Electric Boat



David and Elaine Miceli

New London Self-Storage



Baude & Rolfe, CPA's, P.C.



Old Saybrook Catering Co.

HEVER

East, LLC



Sheehan & Sheehan Law

2012 Sponsors & Supporters cont'd

Ruby



Josi Davis

SAVELIVES.COM
Common Cents EMS Supply

Mystic Medical Group

The Bulletin

M&J Bus, Inc

Howie & Marcie Brensilver

Jill Burmahl

Reynolds Garage & Marine Inc.



Insurance • Benefits • Finance

Met Life

twocreatives.com

Michael & Stacey Gualtieri

Charter Oak Federal Credit Union

Gowrie, Barden & Brett, Inc

Pearl

Arrow Paper Party Rental, Benchmark Wealth Management, Bob Valenti Chevrolet-Oldsmobile Inc., Borouh Bodyworks, Chelsea Groton Bank, Christopher Holloway, David Mark Primo DDS, Dj Matchez & Dj Firelance, Dutch Tavern, Ed Lorah & Associates LLC, Ellen & David Swercewski, Essex Financial Services, Essex Savings Bank, Flanders Fish Market, Freeport-McMoRan Copper and Gold, Independent Electronics & Communications, Josephine Guarnaccia, Mallove's Jewelers, Merrill Lynch Wealth Management, Old Lyme Ice Cream Shoppe, Penny Lane Pub, PEPSICO, Professional Eyecare LLC, rb designs, The Black Sheep, The Griswold Inn, The Maniscalco Family, Zen & Now

Walk Marker
Sponsors

Pequot Commercial, Cavasino & Company LLC, Dime Bank, Law Office of Yona Gregory, Lee Company, Seacoast Orthopedics, Sava Insurance Group

Supporters

Advanced Pre-Cast, Anytime Fitness, Attawan Beach Association, Camp Harkness, Channel 3 Eyewitness News, Coca Cola Bottling Company of SECT, Coffee's Country Market, Colin Britt, CVS Pharmacy Groton, David & Lynne Murphy, Design Label, Goshen Firehouse, Greater Mystic Chamber of Commerce, Hall Communications Inc., Kadi Fazio, Lazizah Bakery, Levine Distributing Co., Inc., Mermaid Liquors, Miss CT 2011 Morgan Amarone, Mohegan Sun, Mr. & Mrs. David E. Moskow DMD, Niantic Baptist Church, Niantic Merchants-Paint the Town Pink, Old Saybrook American Legion, Old Saybrook Chamber of Commerce, Old Saybrook Police Dept., Penske Truck Rental, Pezzello Brothers Fruit & Produce, Rocky Neck State Park, Shoreline Times, St. Ann's Episcopal Church, Scott's Orchard Farm Market, Som Siam Thai Restaurant, Take Care Health Systems, Thames River Greenery, The Compass Group, the e-list, The Greater Norwich Area Chamber of Commerce, Town of East Lyme Town Garage, Waterford Police Department, Waterford Utilities Commission, WTNH

Special thanks to the Community Foundation of Eastern CT!

The Community Foundation funded our summer hire program which supported Walk publicity, Foundation office work, and allowed 5 students to train for our TBBCF marathon.





FUNDING RESEARCH TO FIND A CURE

The 2013 TBBCF Plan

Where are we now?



Where do we want to go?



How do we get there?

**7 Year Average
\$343K/year
Directed to Research**

Vision Statement

- Eradicate all types of breast cancer.

Mission Statement

- To provide critical funding to researchers in search of a cure for breast cancer.
- To direct 100 percent of total gross fundraising dollars toward breast cancer research.



FUNDING RESEARCH TO FIND A CURE

2012 Financial Results

2012 Financial Summary

- \$ 319K raised for research in 2012
- \$2.4 M since our start in 2006

2012 Operations

- \$ 84.7K In Sponsorships, Income
- \$ 63.6K In Expenses
- Expenditures supported by current year sponsors income

2012 Events/Promotions

Amazing!! \$85+K



Bras Across the Village



Tyl Middle School



North Haven High School Pink Week	Old Saybrook Middle School Walk-a-thon	Old Lyme Country Club WGA
Timothy Edwards Field Hockey "Shoot Out Cancer"	Big Y World Class Markets Partners of Hope	Norwich Pub, Tips, etc.
Montville Fights Back - Oakdale Elementary School	Waterford High School "Think Pink Day"	In White - a bridal collective
Waterford Wine & Spirits/Grand Wine and Spirit I & II	Eastern CT Assoc. Realtors - Wine Tasting	Pro-Tek Auto Care
Rally for the Cure: Great Neck Country Club	Brighton Collectibles - Power of Pink	Twisted Vine Fundraiser



Mad Dog Ride to Heal



The Shack Team



Shoot for a Cure



Amazing Athlete Fundraisers

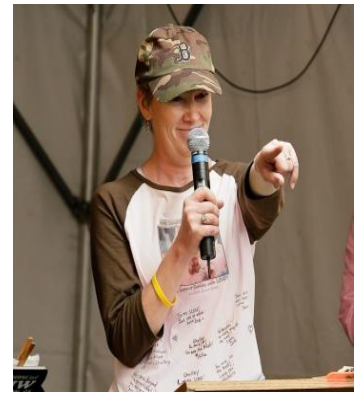
2012 Platinum Fundraisers



Marcie Brensilver

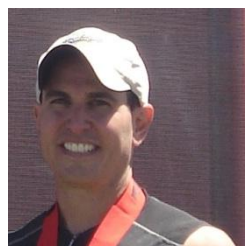


Martha Conn

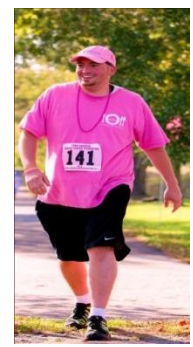


Shelley Gregory

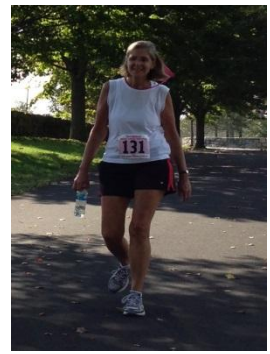
2012 Diamond Fundraisers



Eric Bauman

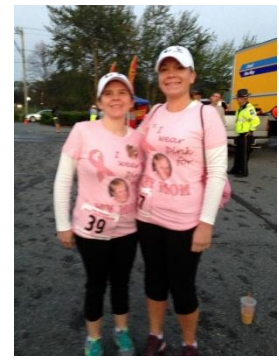


Jeremy Han

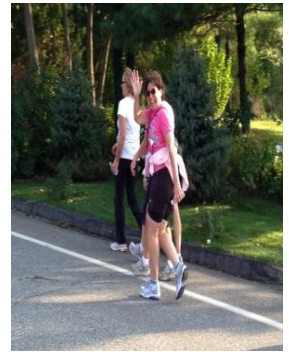


Alice Johansson

2012 Emerald Fundraisers



Michelle Tuthill



Jean Barrasso



FUNDING RESEARCH TO FIND A CURE

Terrific TBBCF Teams

Three teams exceeded \$5K, and two teams donated over \$2.5K

DIAMOND

- ❖ Cancer Crushers - Team Lead: Marianne Esposito
- ❖ Bosom Buddies - Team Lead: Bethany Conroy
- ❖ Pam's Pink Posse - Team Lead: Pam Watt

EMERALD

- ❖ Team Breast Friends - Team Lead: Sara Lemieux
- ❖ Madison - Team Lead: Claudia Marks

FUNDING RESEARCH TO FIND A CURE



FUNDING RESEARCH TO FIND A CURE

2013 TBBCF Annual Meeting

Thank You



FUNDING RESEARCH TO FIND A CURE

2012 Events/Promotions



**Jeremy and
The Shack
team serve up
big bucks for
TBBCF cancer
research!!!**

FUNDING RESEARCH TO FIND A CURE

2012 Events/Promotions



*Bras Across the Village
Basket Raffle*





FUNDING RESEARCH TO FIND A CURE

Spectacular Supporter

"Poster Girl"

2012 Walk Across Southeastern CT



Clare Strickland

FUNDING RESEARCH TO FIND A CURE