



FUNDING RESEARCH TO FIND A CURE

# **2015 TBBCF Annual Meeting**

# Logan's Promise

Geralyn McPhail and Norma McPhail Logan (1958-2006)



**LOGAN'S PROMISE...THE TBBCF Commitment...**  
100% of gross fundraising goes directly to breast cancer research!



FUNDING RESEARCH TO FIND A CURE

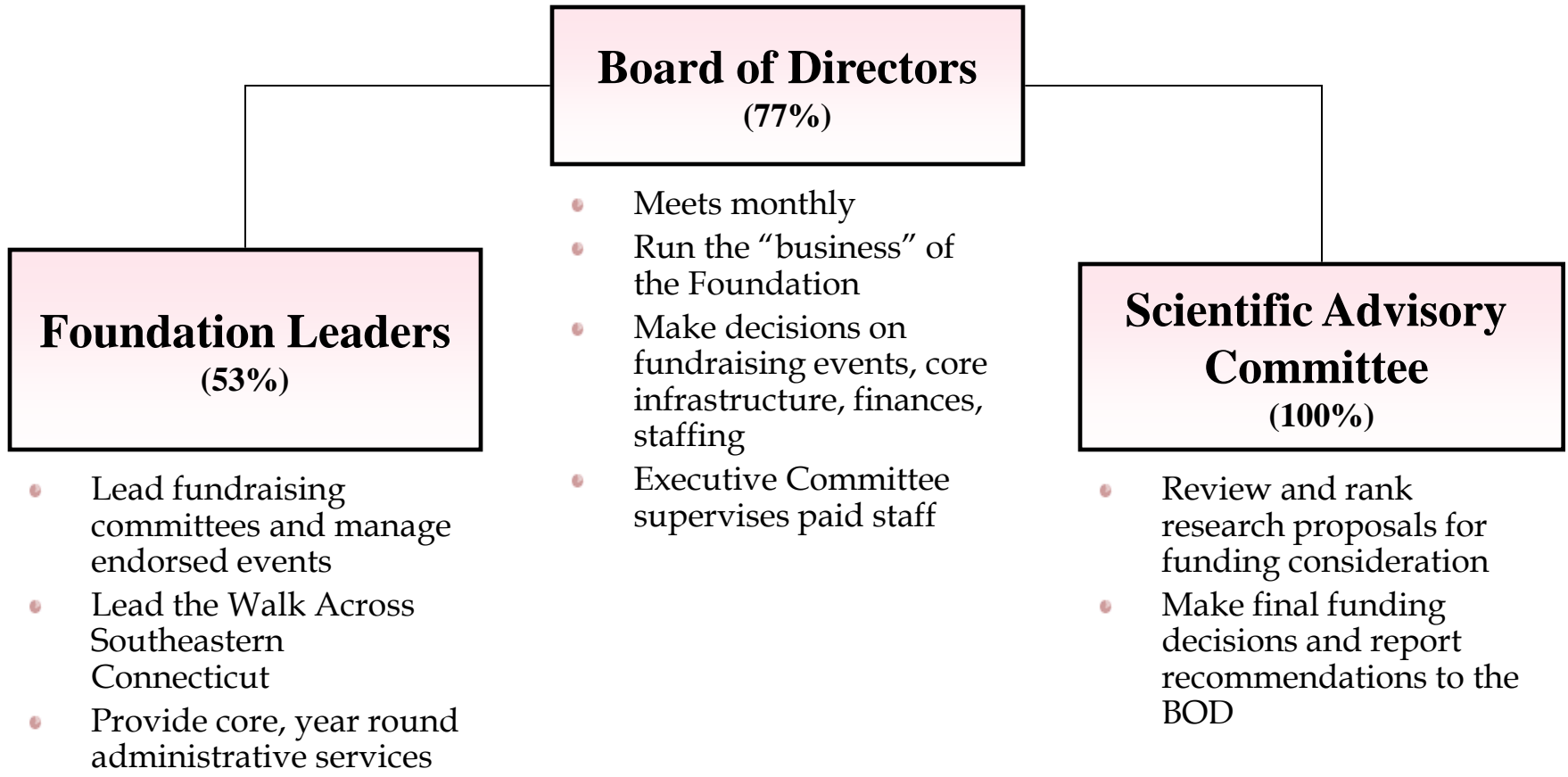
# Celebrating Our 10th Anniversary Walk Across Southeastern CT!!!

- Three Veteran Co-Chairs
  - Ellen Swercewski, Lisa Carroll, and Pat Newborg
  - Veteran and New Team Captains
  - Recognition of 10 Year Walkers and Volunteers
  - Team Captain Kick-off meeting May 13, 2015
- Registration Opens in June
- New Venue for Closing Ceremonies
  - Eugene O'Neill Theater Sponsor



FUNDING RESEARCH TO FIND A CURE

# Operating Model





FUNDING RESEARCH TO FIND A CURE

# Foundation Board of Directors

- Patti Burmahl, President
- Howard Brensilver, MD, Vice President
- Pat Newborg, Secretary
- Stacey Gualtieri, CPA, Treasurer
- John LaMattina, Past President
- Sandy Maniscalco, Co-Founder, Interim Executive Director
- Lisa Carroll, Director
- Michele Sotille-Hoyt, Director
- Max Logan, Director
- Stephen Sheehan, Director
- Laureen Sullivan, Director
- Pam Morris Watt, Director
- Donna Yother, Director



FUNDING RESEARCH TO FIND A CURE

# Scientific Advisory Committee



Nicholas Saccomano, PhD  
Chair, Scientific Advisory Committee



John LaMattina, PhD  
Chair, SAC Standing Committee



Michael Garabedian, PhD



Susan Logan, PhD

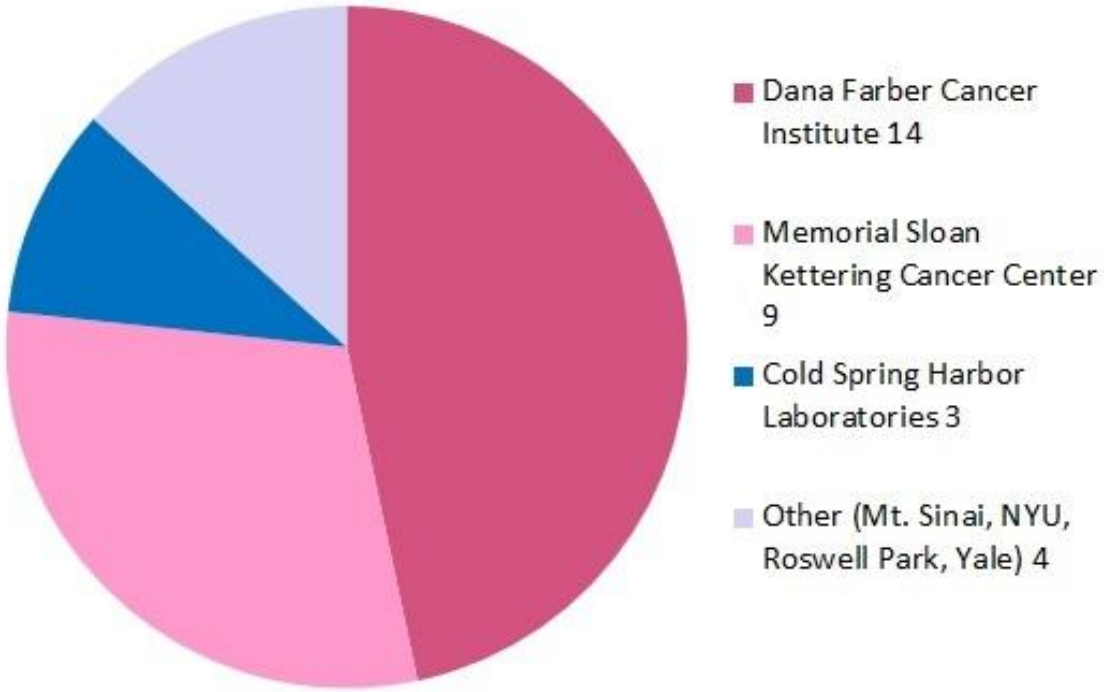


Michael Morin, PhD



FUNDING RESEARCH TO FIND A CURE

# \$3M fundraising dollars directed to research over the past 9 years



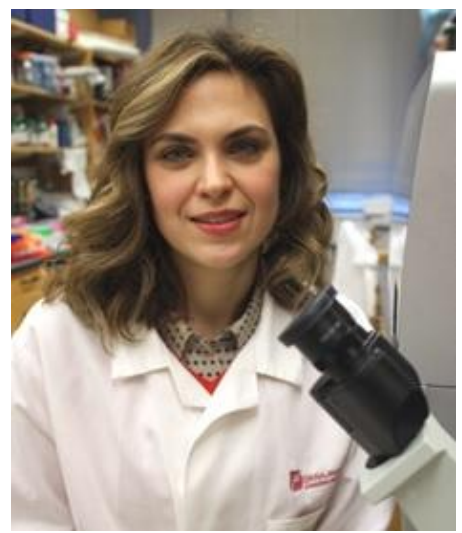


FUNDING RESEARCH TO FIND A CURE

# 2015 Research Grant Recipients



**Dr. Eugen Dhimolea**



**Dr. Nina Ilic**



**Dr. Natalya Pavlova**



FUNDING RESEARCH TO FIND A CURE

# Our signature fundraising event ... we found our niche

Join This Cause | About This Page | Sign In

## 9th Annual Walk Across Southeastern CT

Tweet 0 | Like 23




**It Really Is ALL ABOUT THE CURE we give 100%**

This project was created by Terri Brodeur Breast Cancer Foundation. Want to join this cause? [Create Your Page](#) » Powered by [GroupRev](#)

Campaign Goal	Amount Raised	Donations	Time Left	My Fundraising Goal
\$300,000	\$295,826	3,165	00:00:00	99%

10% 20% 40% 60% 80% 100%



STORY | DONORS (3,165) | TEAMS (50)

Welcome to the **Sponsor a Walker** page. To make a donation, click on the **Give Now** button to the right. From there you will be guided through a secure online process to complete your donation in support of the Walk Across Southeastern CT.

If you are unable to sponsor this walker online, please print the **Sponsor a Walker** or **Sponsor Multiple Walkers** form. If you are eligible for company matching gifts, please mail your employer's matching gift form along with your donation to Terri Brodeur Breast Cancer Foundation, Po Box 785, New London, CT 06320.

The proceeds from this event support the overall mission of the Terri Brodeur Breast Cancer Foundation (TBBCF) a local, non-profit group committed to fighting breast cancer by directing 100% of gross fundraising dollars directly to breast cancer research. Since 2006, TBBCF has awarded grants totaling over \$2.7 million dollars for breast cancer research.

### GIVE NOW

MAKE A SECURE ONLINE DONATION

Share on Facebook

Tweet this on Twitter

Email this Page

Create your own Page

MORE SHARING OPTIONS

Top Advocates For This Campaign

Name: **Marle Brossilver**  
Total Raised: **\$13,211.00**  
[View Page](#)



FUNDING RESEARCH TO FIND A CURE

# 2014 Events/Promotions

## \$52K

Valentine Day Event (Mary D Events) \$8,749	Old Lyme Golf Country Club - \$4,294	Westerly Chamber and Downtown Businesses \$4,000	Grand Wine & Spirits - \$3,049
Old Saybrook Middle School - \$3,000	Fabulously You (Salon Pure) \$2,630	Great Neck Golf - \$2,200	ECAR Wine Tasting - \$2,159
Groton Long Pt. Yacht Club - \$2,156	Twisted Vine (Julie Holland) - \$1,928	Valenti Auto Mall - \$1,605	Norwich Tech PFO Booster Club - \$1,500
Simmons Girls Youth Soccer - \$1,337	Simply Majestic (Tinkled Pink) - \$1,300	Westerly 2 <sup>nd</sup> Annual BCAW \$1,600	Waterford H.S. (Think Pink) - \$1,300



FUNDING RESEARCH TO FIND A CURE

# WE GIVE 100%

## 2014 Fundraising

Raised from the Walk		\$ 295,826
Other fundraising events		79,329
<b>Total raised for research</b>		<b>\$ 375,155</b>

## 2014 Walk Support

Sponsorships, walk registration fees, etc.		\$ 89,419
--	--	-----------

## Foundation Overhead

Walk		\$ 18,824
Salaries and related expenses		45,985
Marketing		15,967
Website		3,318
General Administration		15,753
<b>Total Foundation Overhead</b>		<b>\$ 99,847</b>



FUNDING RESEARCH TO FIND A CURE

# 2014 Events/Promotions

## \$52K

- **Recurring Events**

- Old Lyme Golf Club
- Grand Wine & Spirit
- Old Saybrook Middle School
- Great Neck Golf
- ECAR Wine Tasting
- Waterford High School Think Pink

- **New Events (2014)**

- Simply Majestic Tickled Pink
- Fabulously You
- Norwich Tech PFO Booster Club
- Valenti Auto Mail Test Drive Campaign
- Groton Long Point Yacht Club

- **Westerly Events**

- 3<sup>rd</sup> Annual Pink Ladies at the Twisted Vine
- 2<sup>nd</sup> Annual BC Awareness Honoree – Michele Gardner
- Greater Westerly-Pawcatuck Chamber Calendar Men
- Downtown Business Association – PINKtober
- Celebrity Chef at Brazen Hen

- **TBBCF Winter Event – 50 Shades of Pink Dinner Dance Silent Auction – Mary D Events**



FUNDING RESEARCH TO FIND A CURE

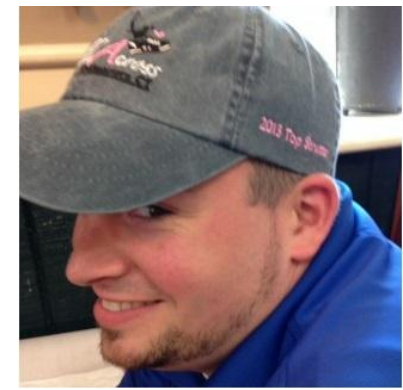
# Top 5 Walk Donation Fundraisers 5K and Above



Marcie Brensilver



Shelley Gregory



Jeremy Hahn



Jean Barrasso



Eric Bauman

FUNDING RESEARCH TO FIND A CURE

# Top 5 Walk Team Fundraisers 5K and above – Top \$trutters

❖ Cancer Crushers – Team Lead: Marianne Esposito



❖ Pam's Pink Posse – Team Lead: Pam Morris Watt

❖ Zen and Now – Team Lead: Lisa Bragaw



❖ Heart Be Strong – Team Lead: Bobbette Clapsadle



❖ Sava Sole Sisters – Team Lead: Donna Yother





FUNDING RESEARCH TO FIND A CURE

# **2015 TBBCF Annual Meeting**

***Thank You***